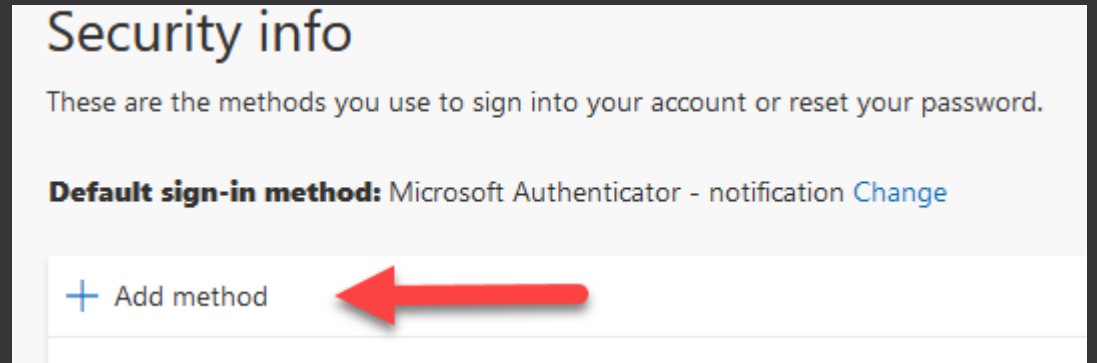


Setting up Microsoft Authenticator App for SCC Single Sign On

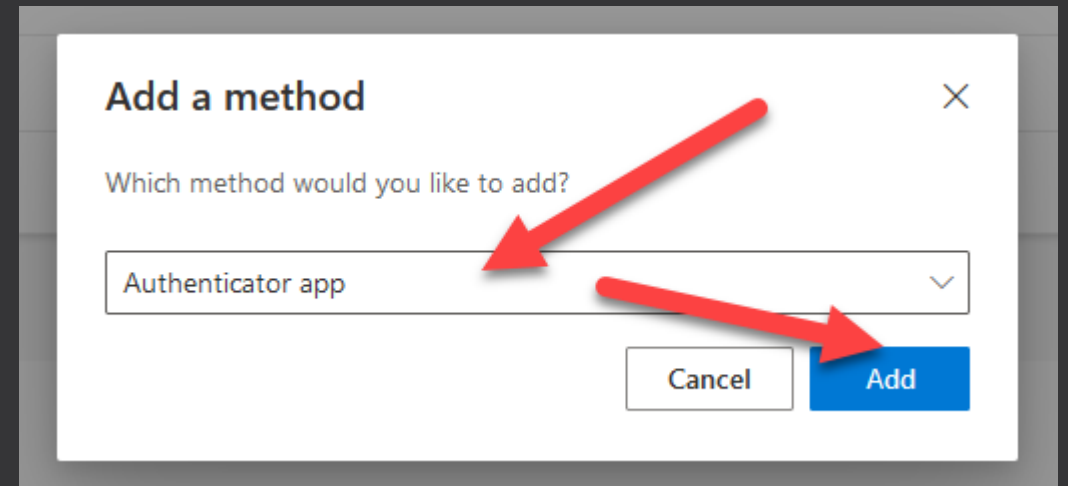
Click here to begin: [My Sign Ins: Security Info](#)

*You will need to log in with your SCC Hub password and credentials if you
have not done so already*

Click **+ Add Method** from
the main screen

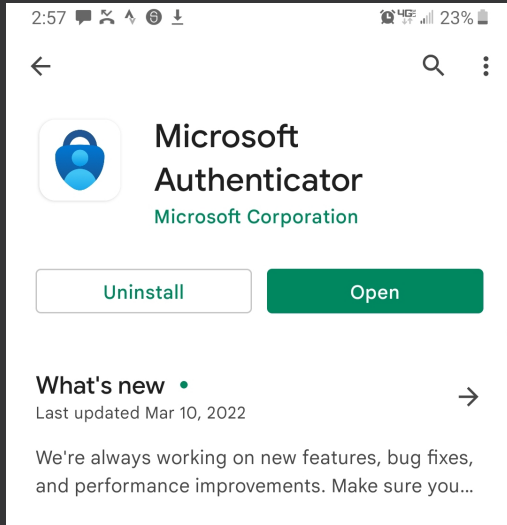


Select to add **Authenticator
app** from the dropdown menu
and click **Add**

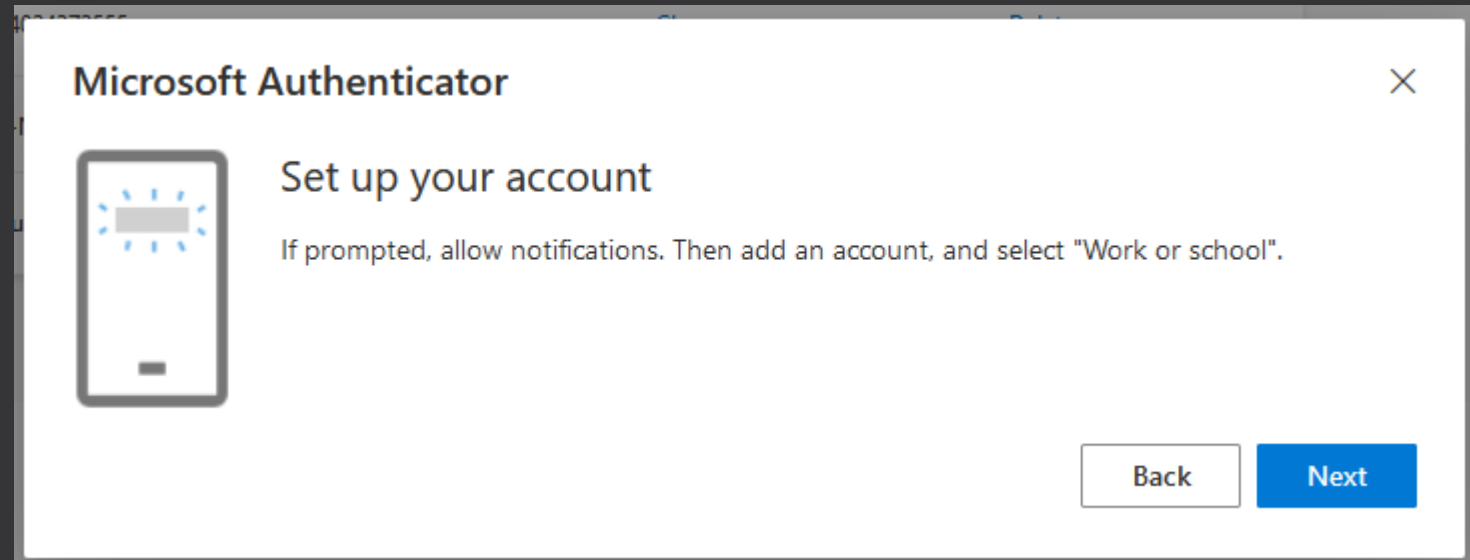
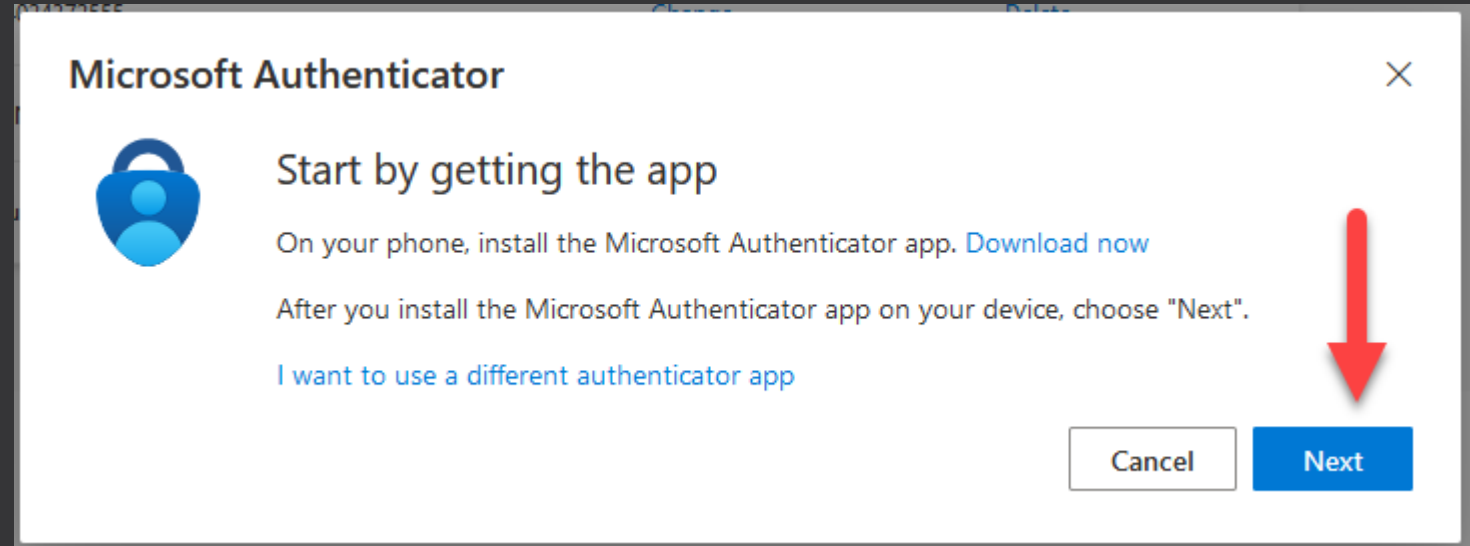


GET THE APP

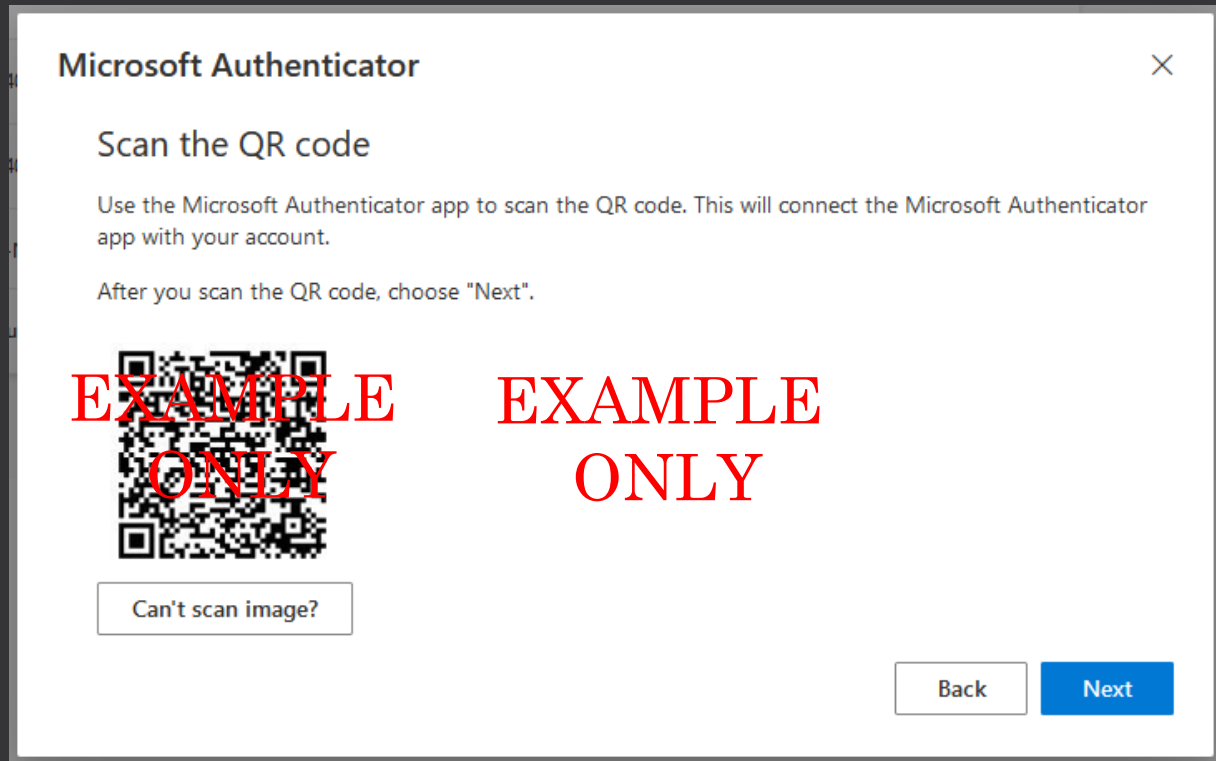
You can find the MS Authenticator app on Google Play or the Apple App Store (example below)
Once installed, click **Next**



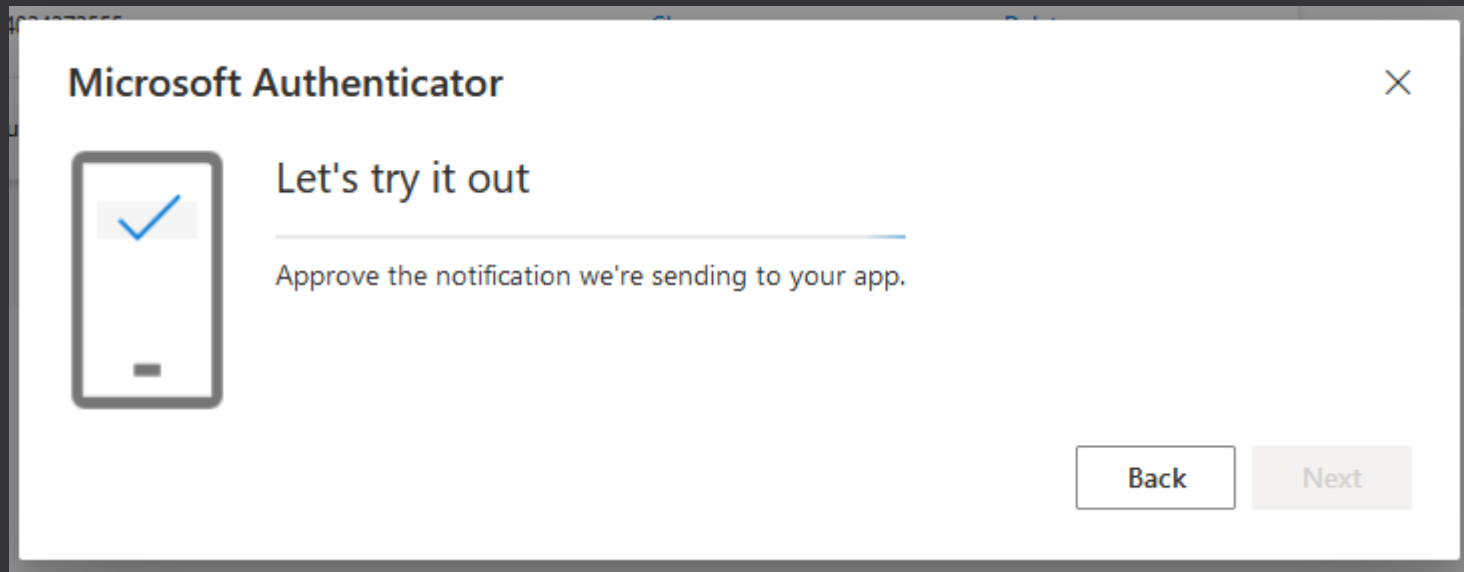
From within the App, click on the three dot icon on the top right and select “+ Add Account” > Work or School Account > Scan a QR Code



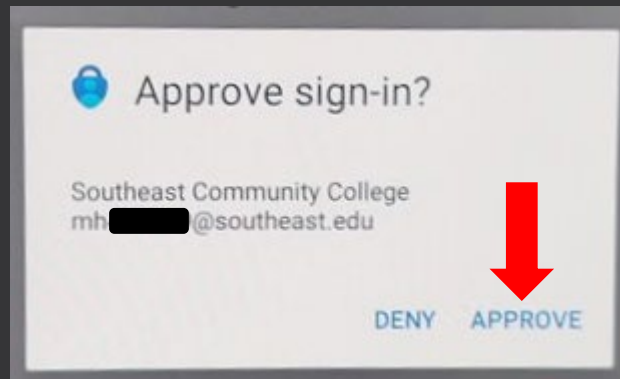
You must use the code generated on your PC screen, then click Next after you are notified that the “account added successfully”



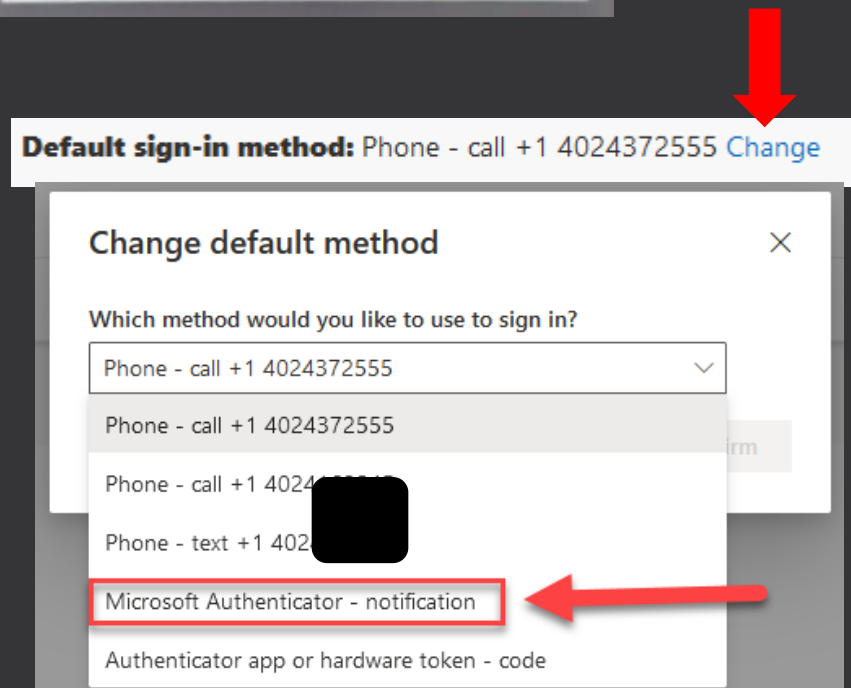
A notification prompt will be sent to your Authenticator for verification



Click on “APPROVE” on your phone to authenticate your login



Now that your Authenticator is set up, click on “Change” to set the **Default sign-in method** as **Authenticator – notification** and confirm this choice



Questions?

**You can contact the SCC Help Desk via
Phone, Email or Chat!**

- Help Desk main site (includes hours and Chat link) [Link](#)
- Update or Change Authentication/Password recovery Information
[Link](#)

Phone: 402-437-2447

Email: Helpdesk@southeast.edu