

Summer 2025 Credit Courses at the Learning Center at Wahoo



BSAD-1010

Microsoft Applications I

Prerequisite: Keyboarding skills and prior computer experience recommended

Use of an Internet browser to work with electronic mail and cloud computing. Use of the Windows operating system and File Explorer to manage folders and files. Use of the Microsoft Office software suite to learn and apply basic features of Word, Excel, Access, and PowerPoint through the creation of various projects.

This is a hybrid course. Hybrid courses require students to meet face-to-face at regularly scheduled times for 50% or more of the course and 50% or less of the course will be online and require computer and Internet access. (3.0 semester credits)

Cost: NE Resident: \$369/Non-Resident: \$432

Mon., Tues., Wed., & Thurs., May 19-June 19

8-9:25 a.m.
Reiter

WHLC, Room 102
BSAD-1010-HBWH4

HLTH-1040

Medication Aide

SCC Requirement: Medication Aide students MUST be at least 18 by the start date of the class.

The purpose of the Medication Aide position is to provide a safe way for individuals other than licensed health care professionals (doctors, nurses, etc.) to provide medications to individuals who are not able to take medications by themselves. Medication Aides assist with the provision of medications. You must be at least 18 years of age or older to be employed as a medication aide in the state of Nebraska.

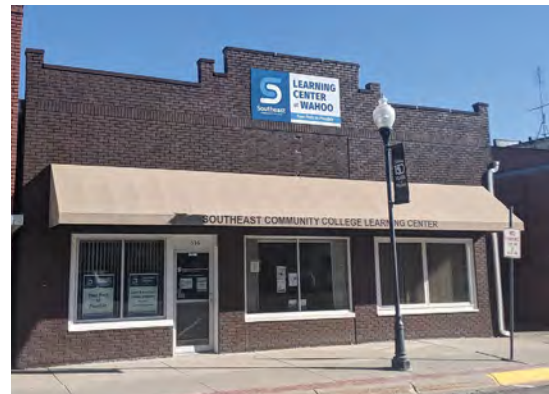
State laws control the activities of a Medication Aide. These laws ensure the health, safety, and welfare of people by providing for the accurate, cost-effective, efficient, and safe utilization of Medication Aides to assist in administration of medications. You will be responsible for the additional costs charged by the state of Nebraska to complete your licensure. (2.5 semester credits)

Cost: NE Resident: \$307.50/Non-Resident: \$360

Sat., May 31-July 26

8 a.m.-1 p.m.

SCMC
HLTH-1040-HBWH8



Earn College Credit at Your Learning Center

Our Learning Centers offer a flexible way to earn college credit by bringing the classroom to you.

We offer a variety of live, interactive credit classes online which allows you to:

- Create a flexible class schedule
- Participate in real-time class discussions
- Earn credit towards your Associate's degree
- Fulfill general education requirements
- Save time and money

Do you want to take a class that is not offered at your Learning Center? Contact your Learning Center to see what options are available.

cstukenholtz@southeast.edu or
402-323-5581

» southeast.edu/WahooLC

Location Key

WHLC.....Learning Center at Wahoo,
536 N. Broadway St.
SCMC.....Saunders Medical Center,
1706 County Road J

► Register at southeast.edu/registrationandrecords

HLTH-1150

Nursing Assistant (Hybrid)

Prerequisite: Must be at least 16 years old

Overview of the health care system and role of the nursing assistant as a health care team member. Discussions on the concepts of basic human needs, professional behavior, communication, legal/ethical issues, and multicultural diversity.

Teaches basic nursing skills, including bathing, assisting with dining, ambulating, transferring, and toileting. Included in this course are classroom, nursing lab and clinical experiences in a health care setting.

*Course is approved by the Nebraska Department of Health and Human Services Regulation and Licensure. Upon successful completion of this course, the student is eligible to test for placement on the Nebraska Nursing Assistant Registry. **For additional classes, visit southeast.edu/nursingassistant. This course does not qualify for financial aid. For funding options, contact the Learning Center coordinator.***

If you have questions, contact Natasha Holly at 402-437-2552 or nholly@southeast.edu. Required textbook and materials can be purchased at the SCC Campus Store, 8800 O St., Lincoln, during regular business hours, by phone at 402-437-2560, or at sccbookstore.com. (3.0 semester credits)

High school students in SCC's service area can register for the "HS" sections during the Fall and Spring terms. If you are a high school student outside of SCC's service area, please register for the regular Nursing Assistant sections.

Cost: NE Resident: \$369/Non-Resident: \$432

May 28-July 30

Lab/Clinical Location: SCMC

Lab/Clinical Schedule: Mon. & Wed. from
5-9 p.m. HLTH-1150-HBWH8

For registration information and how to register, visit
southeast.edu/registrationandrecords.



facebook.com/SCCLearningCenteratWahoo

